



INTELLIGENT



SAFE

24V
VIRTUAL
ENCODER

VERSATILE



Ditec NeoS

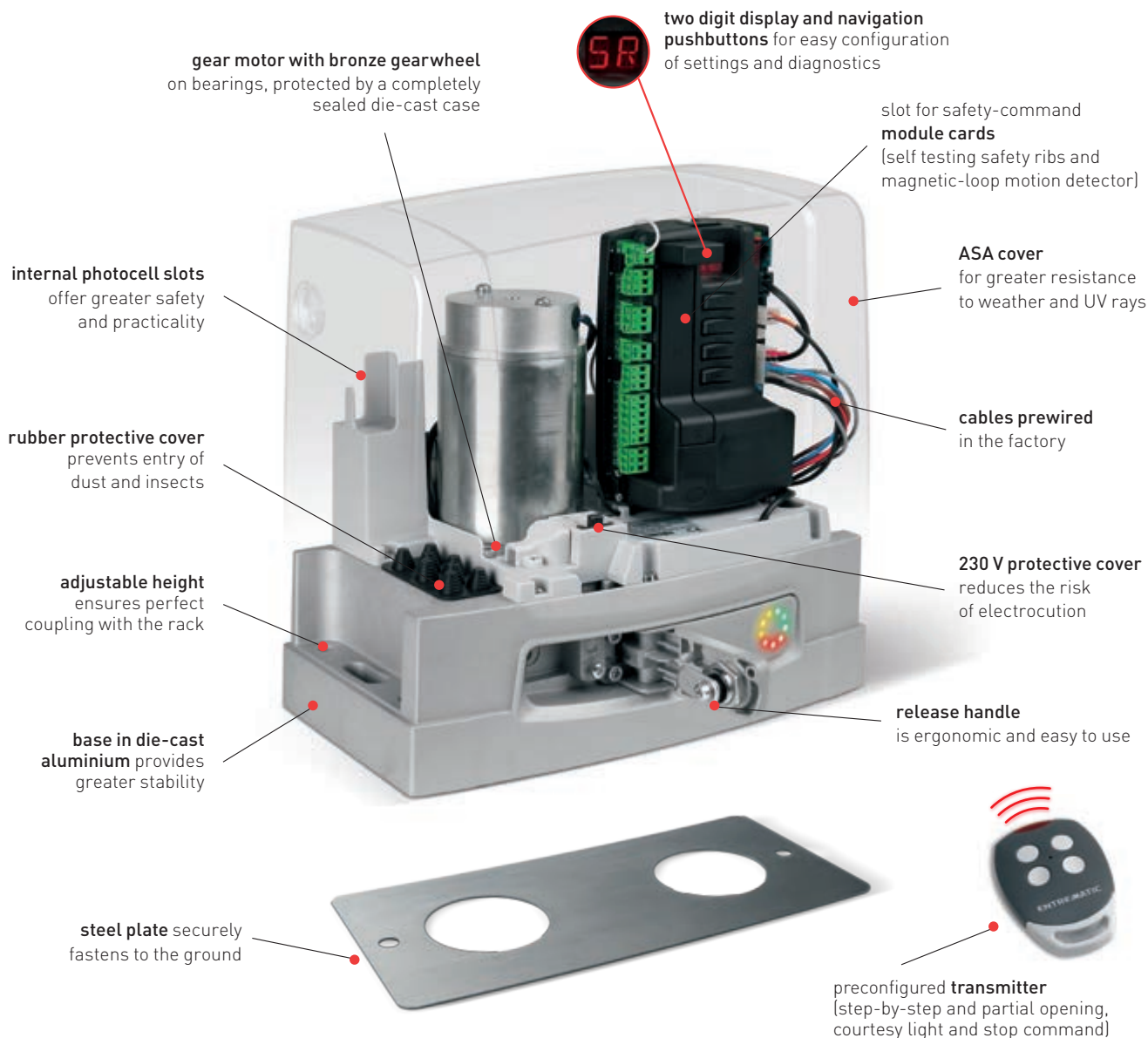
EN

Automation system for sliding gates
up to 1000 Kg

Sturdy and Reliable

Ditec NeoS is a sliding-gate operating device for residential, commercial and industrial applications. It is designed to resist even under heavy use and demanding weather conditions.

With quick installation and easy maintenance, it is available in 4 different versions: 300 Kg, 400 Kg, 600 Kg and 1000 Kg. The operating device features a built-in control panel and display. Two different performance levels are available: **Ditec NeoS** and **Ditec NeoS+**.



OUR EXPERTISE AT YOUR SERVICE

A complete range. A dedicated team of specialists. Excellent technology and design. Passionate about being different. **Entrematic** is a commercial partner with a complete range in the entrance automation sector, which combines specialised know-how and high-profile brands. **The Ditec brand**, has been a world leader for more than 40 years, offering a complete range of automation systems for gates, automatic doors and rapid doors.

Normstahl
ENTRE/MATIC

DYNACO
ENTRE/MATIC

Ditec
ENTRE/MATIC

em
ENTRE/MATIC

KELLEY
ENTRE/MATIC

SERCO
ENTRE/MATIC

Amarr
ENTRE/MATIC

Ditec NeoS | a complete product

COMPLETE PEACE OF MIND:

sturdy, durable and reliable over time

- **single-block, die-cast aluminium base** provides unmatched stability
- **special high-quality, self-levelling grease** keeps screws and crowns constantly lubricated
- our **choice of materials and the internal arrangement of components** is designed to keep out moisture, dust and insects
- the **temperature sensor** fine-tunes the gear motor's performance in the event of cold, ice and snow. [NIO - No Ice Option - function]

INSTALL AND CONFIGURE

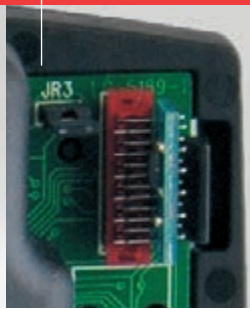
the operating device more quickly

- **steel plates of different thickness and design** allow for correct installation in all circumstances and **levelling screws** can be used to adjust the operating device to the millimetre
- **IP24D protection rating** prevents all contact with live parts
- the **self-learning procedure** is made easy by the display, navigation pushbuttons and a specific remote control, for **installation of the motor in just two steps**
- there are **three predefined configurations** for residential and condominium use. But that's not all: **removable storage** allows operating settings to be saved and copied to another operating device
- in the event of disturbance/interference, **433 MHz and 868 MHz** frequencies are available

Motor shaft
in steel and bronze



Removable storage
for saving settings



AUTOMATION SYSTEM

with guaranteed periodic servicing

- **total operation counter** keeps track of the total number of cycles carried out by the operating device
- **partial operation counter** (can be reset) to set a programmed maintenance threshold at which the flashing light will tell your customer that it's time to carry out servicing!



FULL COMPLIANCE WITH EU DIRECTIVES AND STANDARDS

- **2014/30/EU - EMCD** - Electromagnetic Compatibility Directive
- **2014/53/EU - RED** - Radio Equipment Directive
- **2006/42/CE** - Machines Directive - (Annex II-B; Annex II-A; Annex I-Chapter 1)
- **Harmonised EU Standards:** EN ISO 13849-1 and EN ISO 13849-2 (certified by TÜV Rheinland); EN 60335-1; EN61000-6-3; EN61000-6-2; ETSI EN 300 220-1; ETSI EN 300 220-2; ETSI EN 301 489-1; ETSI EN 301 489-3
- **Other standards/technical specifications applied:** EN12445; EN62233; EN55014-1
- **ITT tests** passed with active and passive safety rib (EN 12453)



Ditec NeoS+ | unique performance

The **NeoS+ range guarantees** advanced functions and exclusive technical specifications

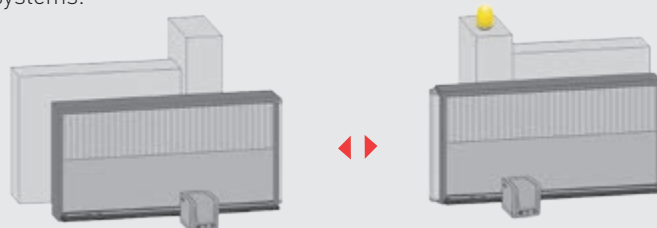
WANT MORE PRECISE CONTROL OVER SETTINGS

and more room for wiring?

Ditec NeoS+ offers you an advanced control panel for **more precise adjustment of all settings and additional terminals** for more convenient wiring operations:

- dedicated opening/closing contacts
- emergency STOP command
- contact to indicate gate status
- independent 400 W-power contact for electric/electronic devices (i.e. garden lights, fountains, garden irrigation systems, etc.)

Dedicated terminal for simple and quick connection of two Ditec NeoS+ operating devices in a master/slave configuration for synchronised control of double-wing or interlocked automation systems.



CHECK THE STATUS

of your operating device!

LEDs allow you to easily monitor the status of the operating device without opening the ASA cover: correct operation, battery mode, release-shutter open, fault or maintenance request. If you need more information, you can remove the cover and read the display by simply loosening one screw!



IF YOU ARE UNABLE to solve a problem

Connect the USB accessory to the port available on the control panel to allow monitoring of the installation and the operating device. All data will be saved on the flash drive supplied and can be analysed on a PC using the software supplied with the system

Ditec NeoS ACCESSORIES ARE EASY TO CHOOSE

Radio remote controls

transmitter (433 MHz and 868 MHz)
for setting functions



Traction kit

with chain



USB connection kit

for diagnostics on a PC



Rack

- in nylon, complete with screws (integrated supports) - 28x20x1000 mm
- in stainless steel, complete with screws and supports - 30x12x1000 mm



Battery set

for emergency power supply



Plates

- steel plate for heavy applications
- adjustable support for lifting off the ground
- steel plate for retrofit installations





INTELLIGENT

Ditec NeoS includes a rapid self-learning procedure, which automatically records all forces in two operations, adapting itself and self-adjusting to the most diverse installation contexts.



SAFE

The 24-Volt DC virtual-encoder technology enables constant electronic control of the impact forces and immediate obstacle detection ensuring that the operating device stops or motion is reversed (if configured). If this is not enough, you can add magnetic limit switches (already included in some versions). Additionally, in the event of a blackout, the electronic control panel intervenes activating the incorporated batteries (optional) which ensure correct operation of the system.

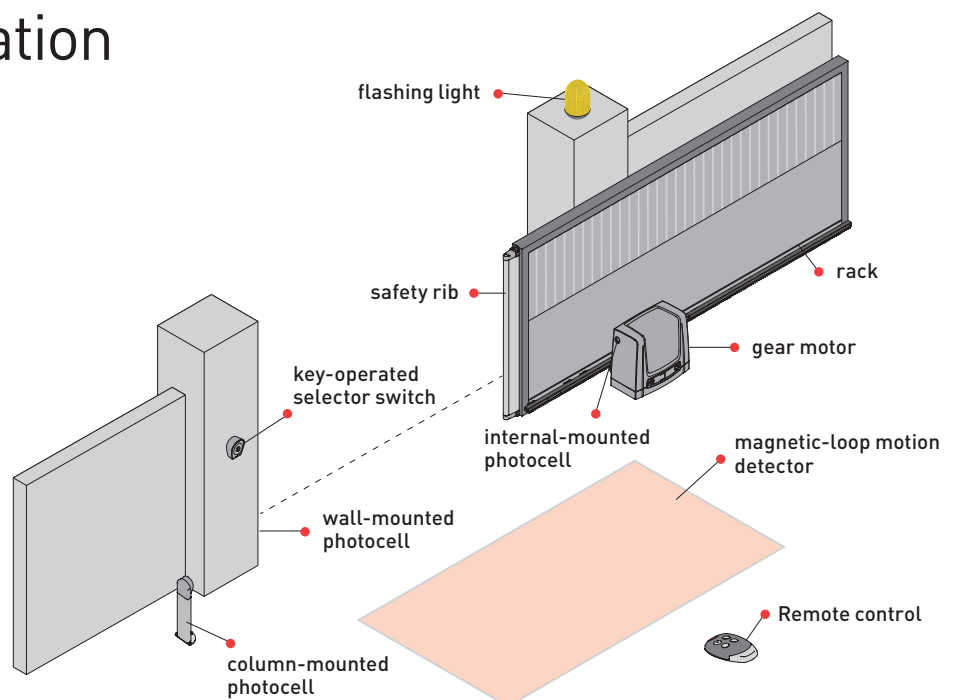


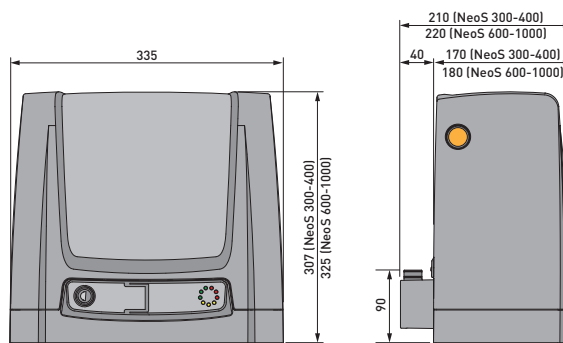
VERSATILE

From the control panel, it is possible to precisely manage position and speed at all times, allowing adjustment for acceleration, deceleration, start time, slowdown distance and approach speed during opening and closing.

Example of installation

Discover the entire range of Ditec brand products at www.ditecentrematic.com





Technical specifications

Description	NeoS 300	NeoS 400 - NeoS+ 400	NeoS 600 - NeoS+ 600	NeoS+ 1000
Max. leaf weight	300 kg	400 kg	600 kg	1000 kg
Stroke control	virtual encoder	virtual encoder	limit switch + virtual encoder	limit switch + virtual encoder
Maximum opening	12 m	12 m	20 m	20 m
Duty class	4 - heavy duty	4 - heavy duty	4 - heavy duty	4 - heavy duty
Intermittent operation	S2 = 30 min S3 = 50%	S2 = 30 min S3 = 50%	S2 = 30 min S3 = 50%	S2 = 30 min S3 = 50%
Power supply	230 V AC / 50/60 Hz	230 V AC / 50/60 Hz	230 V AC / 50/60 Hz	230 V AC / 50/60 Hz
Motor power supply	24 V DC	24 V DC	24 V DC	24 V DC
Power input	1.2 A	1.2 A	1.5 A	2 A
Thrust	300 N	400 N	600 N	1000 N
Opening and closing speed	0.1 - 0.25 m/s	0.1 - 0.25 m/s	0.1 - 0.24 m/s	0.1 - 0.19 m/s
Protection rating	IP 24D	IP 24D	IP 24D	IP 24D
Operating temperature	-20°C / +55°C [-35°C / +55°C with NIO enabled]			

Main functions of the system

Description	NeoS 300 - 400 - 600	NeoS+ 400 - 600 - 1000
Control panel	ref. CS12E with integrated radio receiver	ref. CS12M with incorporated radio receiver
Radio frequency	433.92 MHz standard - 868.65 MHz (with GOL868R4)	433.92 MHz standard - 868.65 MHz (with GOL868RS)
Batteries	■ (optional)	■ (optional)
Solar-energy ready		■ (ready)
Accessories power supply	24 V DC / 0.3 A	24 V DC / 0.5 A
Flashing light	24 V DC	24 V DC
Automation-system status indicator output		■
Courtesy light output (up to 400 W)		■
Micro USB connection for PC diagnostics		■
Automatic closure activated by external timer		■
8.2 KΩ-resistance safety rib	■ (with GOPAV system)	■ (with GOPAV system)
Force and speed setting	via display	via display
ODS - Obstruction Detection System	■	■
Braking/slowing down	via display	via display
Partial opening control	■ (only with remote control)	■ (with remote control and selector)
Open/close control	■	■
Timer controlled automatic closing	■	■
Hold-to-run control	■	■
Emergency stop/reverse	■	■
Safety-test function	■	■
Soft Start	■	■



Entrematic Italy S.p.A.

Largo U. Boccioni, 1 • 21040 Origgio (VA) • Italy

Tel +39 02 963911 • Fax: +39 02 9650314

ditec@entrematic.com

www.ditecentrematic.com • www.entrematic.com

Cod. N208B - 10/2016
Ditec NeoS

RED APPLE INTERNATIONAL

Present in: France, Germany, Spain, Turkey and Canada.

For addresses and contact information see our website www.ditecentrematic.com

